

Flange & Shaft

# TORQUE SENSOR

YDFS  
Series



- Torque Ranges 10Nm to 5kNm
- 0.3% Accuracy Class
- Suitable for vertical applications
- Slip ring technology
- Flange/drive shaft connection
- 3 YEAR WARRANTY

#### Options Available

Customer-specific measuring ranges

Supplied With Any Instrumentation and Calibrated as a Complete System with Traceable Certificate

## DESCRIPTION

The YDFS torque transducer is designed for continuously rotating applications and uses slip rings to transfer data. Particularly suitable for vertical application the YDFS has a flange coupling at one end and a keyed shaft at the other.

The YDFS series can be further complimented by any of our range of instrumentation to offer a complete system, supplied and calibrated from a single supplier.

*Transducer Specialists...*

**APPLIED MEASUREMENTS LIMITED**

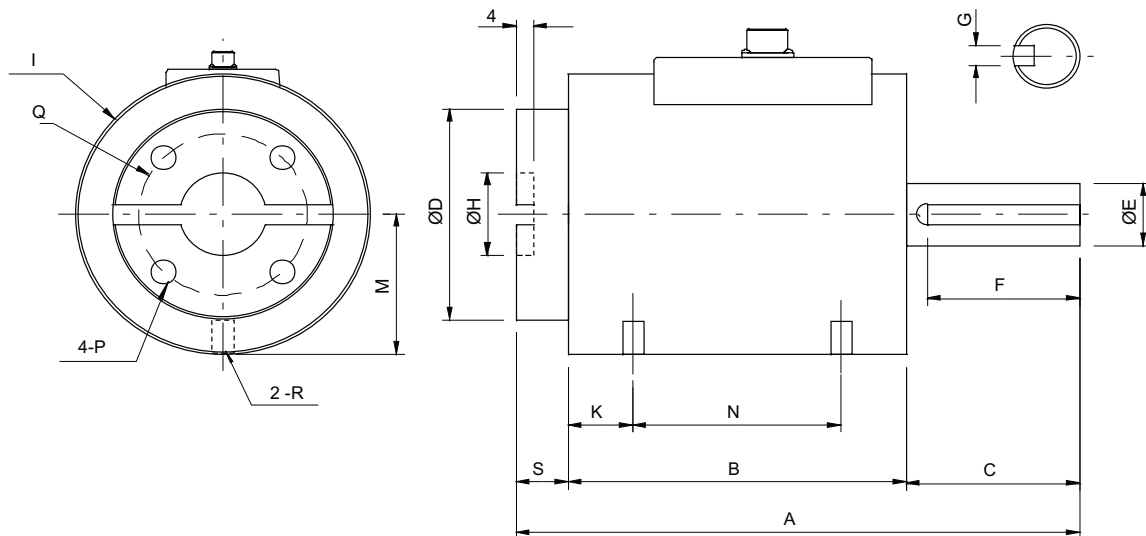
3 MERCURY HOUSE - CALLEVA PARK - ALDERMASTON - BERKSHIRE - RG7 8PN - UK

Tel: (+44) 0118 981 7339 Fax: (+44) 0118 981 9121 email: [info@appmeas.co.uk](mailto:info@appmeas.co.uk) Internet: [www.appmeas.co.uk](http://www.appmeas.co.uk)



# SPECIFICATION

CHARACTERISTICS	YDFS	UNITS
<b>Torque Ranges:</b>	<b>10 - 5000</b>	<b>Nm</b>
<b>Rated Output (FSO):</b>	<b>1.5</b>	<b>mV/V</b>
<b>Excitation Voltage:</b>	<b>10</b>	<b>VDC</b>
<b>Safe Overload:</b>	<b>150</b>	<b>% FSO</b>
<b>Non-Linearity:</b>	<b>0.3</b>	<b>±% FSO</b>
<b>Repeatability:</b>	<b>0.3</b>	<b>±% FSO</b>
<b>Hysteresis:</b>	<b>0.3</b>	<b>±% FSO</b>
<b>Temperature Range Operating:</b>	<b>-20 to -70</b>	<b>°C</b>
<b>Compensated:</b>	<b>-10 to -60</b>	<b>°C</b>
<b>Temperature Effect on Zero:</b>	<b>0.009</b>	<b>±%FSO/°C</b>
<b>Temperature Effect on Output:</b>	<b>0.009</b>	<b>±%FSO/°C</b>
<b>Terminal Resistance (Input/Output):</b>	<b>350±3</b>	<b>ohms</b>
<b>Insulation Resistance:</b>	<b>300</b>	<b>megohms</b>
<b>Environmental Protection:</b>	<b>IP 503</b>	
<b>Cable</b>	<b>3 screened Ø7mm</b>	



CAPACITY	A	B	C	ØD	ØE	F	G	M	N	O	ØH	ØI	K	ØP	Q	S	R	RPM
10-20Nm	130	78	40	51	15	35	5x5	33.6	48	8	20	68	15	4-M6x15DP	39	12	M5x8DP	5.000
50 100 200Nm	157	95	50	65	22	42	5x5	39.0	55	8	38	81	20	4-M6x15DP	56	12	M5x8DP	4.000
500Nm	170	97	60	76	32	50	10x8	42.8	57	10	48	88	20	4-M6x15DP	60	13	M5x8DP	3.000
1kNm	189	96	80	86	42	65	12x8	49.0	56	16	52	100	20	4-M6x15DP	68	13	M5x8DP	3.000
3kNm	207	105	90	102	58	75	16x10	58.0	65	16	60	120	20	4-M6x15DP	85	13	M5x8DP	2.000
5kNm	223	105	100	107	73	85	20x12	62.0	65	20	70	128	20	4-M6x15DP	107	18	M5x8DP	2.000

